

The Homes on Pullman Way

Avondale

3 Bedroom



Lower Level (Optional)	786 to 831 s.f.
First Level	794 to 840 s.f.
Second Level	786 to 831 s.f.
Total	2,366 to 2,502 s.f.
	+2 Car Garage



www.homesonpullman.com

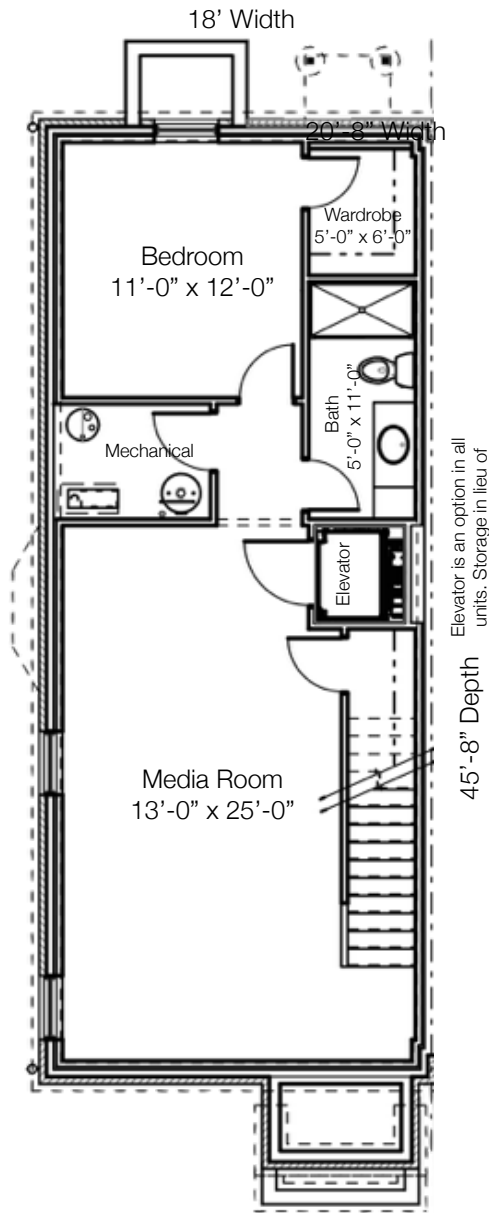
www.wagdev.com

THE HOMES ON
PULLMAN WAY
GRANDVIEW HEIGHTS, OH

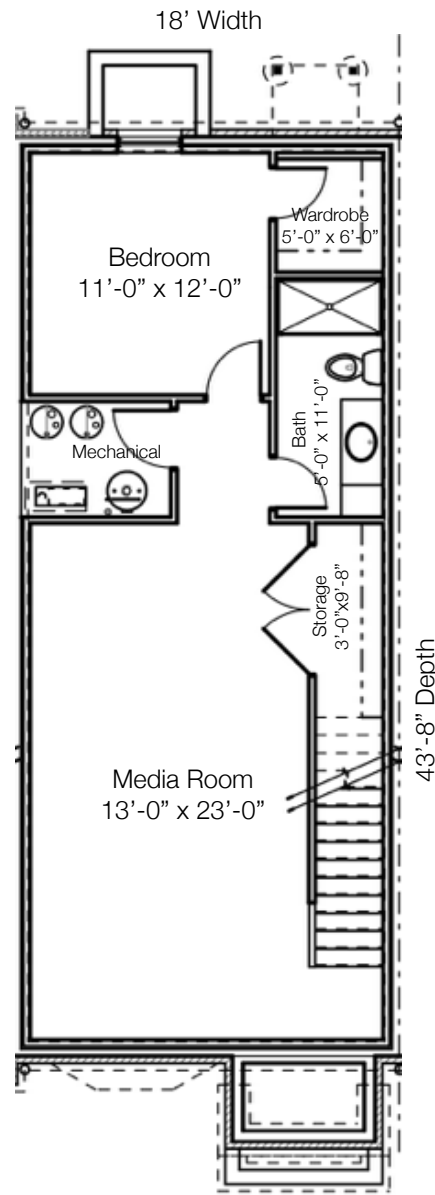


URBAN INNOVATIONS
CONSTRUCTION | DEVELOPMENT

wagenbrenner
DEVELOPMENT



Lower Level End Unit/Elevator
831 s.f.



Lower Level Middle Unit/Storage
786 s.f.

*Floor plans are for marketing purposes only and may not reflect construction drawings.

Seller reserves the right to modify these plans, as necessary, subject to Buyer' review and approval prior to construction

The Homes on Pullman Way

Avondale

3 Bedroom



Lower Level (Optional)	786 to 831 s.f.
First Level	794 to 840 s.f.
Second Level	786 to 831 s.f.
Total	2,366 to 2,502 s.f.
	+2 Car Garage



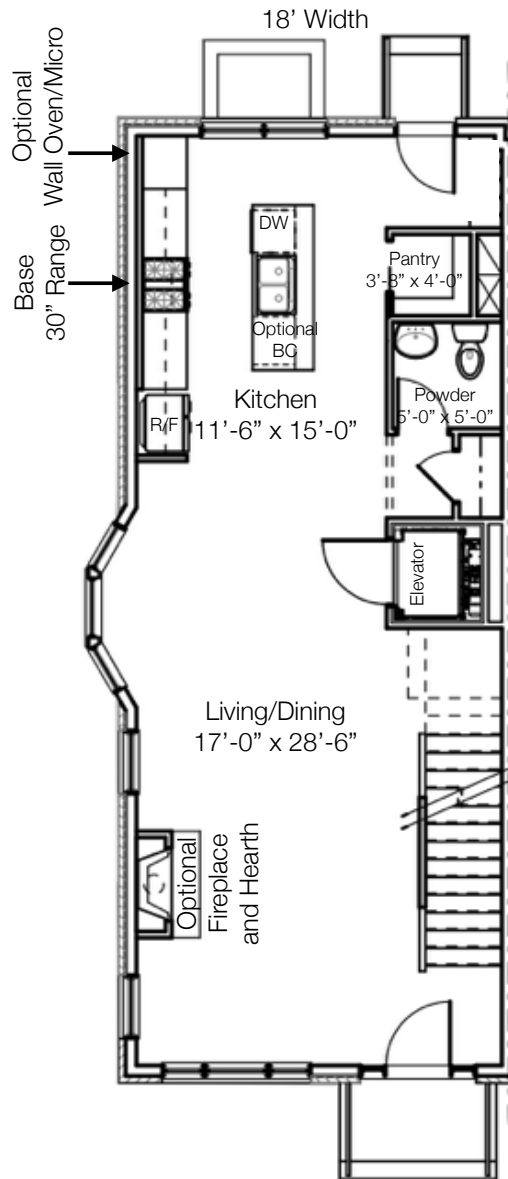
www.homesonpullman.com

www.wagdev.com

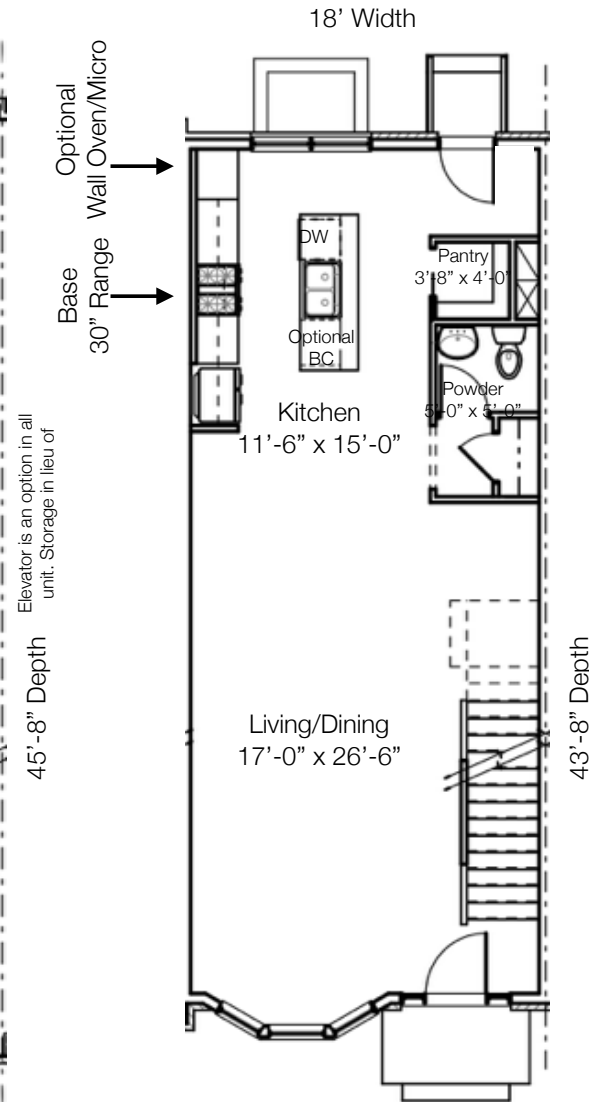
THE HOMES ON
PULLMAN WAY
GRANDVIEW HEIGHTS, OH



URBAN INNOVATIONS
CONSTRUCTION | DEVELOPMENT



First Level End Unit/Elevator
840 s.f.



First Level Middle Unit/Storage
794 s.f.

*Floor plans are for marketing purposes only and may not reflect construction drawings.

Seller reserves the right to modify these plans, as necessary, subject to Buyer' review and approval prior to construction

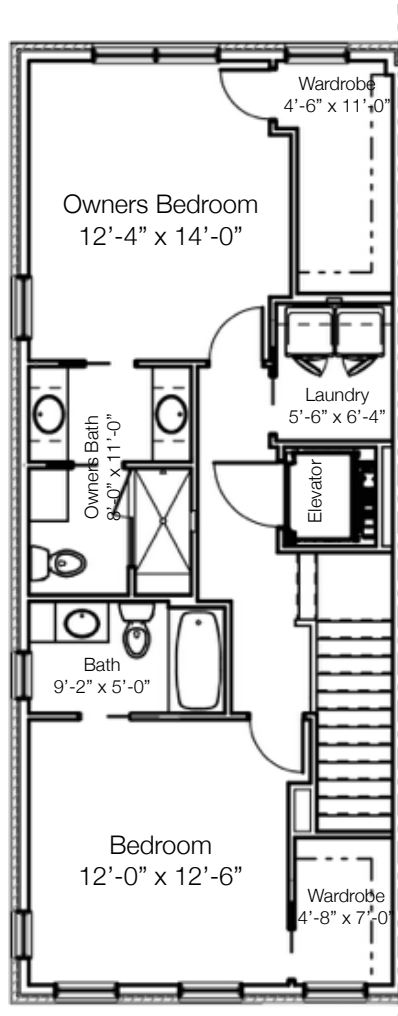
The Homes on Pullman Way

Avondale

18' Width

18' Width

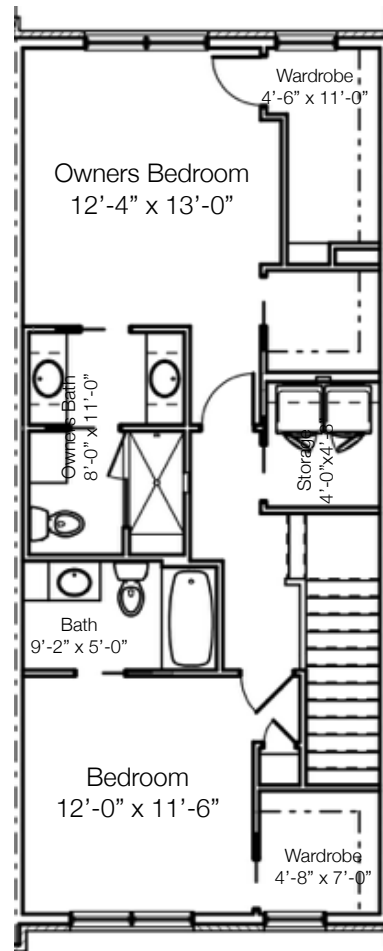
3 Bedroom



Elevator is an option in all units. Storage in lieu of

45'-8" Depth

Second Level End Unit/Elevator
831 s.f.



43'-8" Depth

Second Level Middle Unit/Storage
796 s.f.



Lower Level (Optional)	786 to 831 s.f.
First Level	794 to 840 s.f.
Second Level	786 to 831 s.f.
Total	2,366 to 2,502 s.f.
	+2 Car Garage



www.homesonpullman.com

www.wagdev.com

THE HOMES ON
PULLMAN WAY
GRANDVIEW HEIGHTS, OH



URBAN INNOVATIONS
CONSTRUCTION | DEVELOPMENT



*Floor plans are for marketing purposes only and may not reflect construction drawings.

Seller reserves the right to modify these plans, as necessary, subject to Buyer' review and approval prior to construction